



**SUPER FAST DIODE MODULE TYPE 200A**

**Features**

- High Surge Capability
- Isolation Type Package
- Electrically Isolation base plate

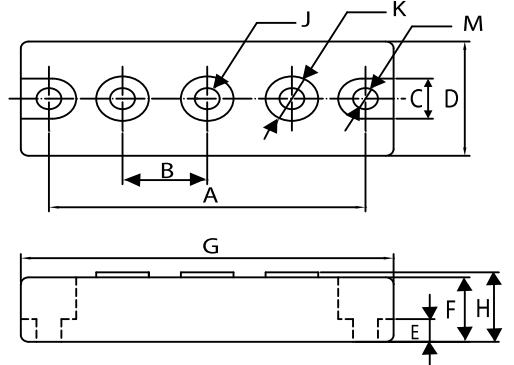
200 Amp Rectifier  
1200 Volt

**Maximum Ratings**

Operating Temperature: -55 °C to +175 °C  
Storage Temperature: -55 °C to +175 °C

Part Number	Maximum Recurrent Peak Reverse Voltage	Maximum DC Blocking Voltage
MURTA200120(R)	1200V	1200V

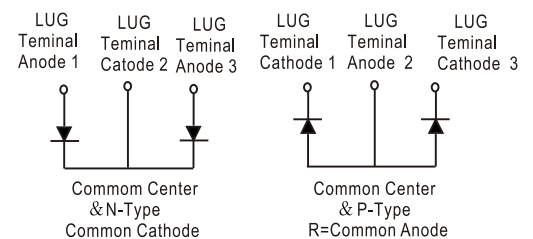
**HEAVY THREE TOWER**



**Electrical Characteristics @ 25 °C Unless Otherwise Specified**

Average Forward Current (Per pkg)	$I_{F(AV)}$	200 A	$T_C = 100^\circ C$
Peak Forward Surge Current (Per leg)	$I_{FSM}$	2000A	8.3ms , half Sine
Maximum Instantaneous Forward Voltage * (Per leg)	$V_F$	2.6V	$I_{FM} = 100A;$ $T_J = 25^\circ C$
Maximum Instantaneous Reverse Current At Rated DC Blocking Voltage (Per leg)	$I_R$	25 $\mu A$ 5 mA	$T_J = 25^\circ C$ $T_J = 125^\circ C$
Maximum Reverse Recovery Time (Per leg)	$T_{rr}$	150ns	$I_F = 0.5A, I_R = 1.0A,$ $I_{RR} = 0.25A$
Maximum Thermal Resistance Junction To Case (Per leg)	$R_{\theta jc}$	0.45 °C/W	

\*Pulse Test: Pulse Width 300  $\mu sec$ , Duty Cycle 2%



DIMENSIONS				
DIM	Inches		Millimeters	
	Min	Max	Min	Max
A	3.150	NOM	80.01	NOM
B	.872	.892	22.15	22.65
C	.465	.479	11.82	12.18
D	1.337	1.356	33.95	34.45
E	.230	.234	5.84	6.16
F	.725	REF	18.42	REF
G	3.668	3.768	93.17	95.71
H	--	.791	--	20.10
J	1/4-20 UNC FULL			
K	.509	.538	12.92	13.68
M	.238	.258	6.05	6.55



Figure .1- Typical Forward Characteristics

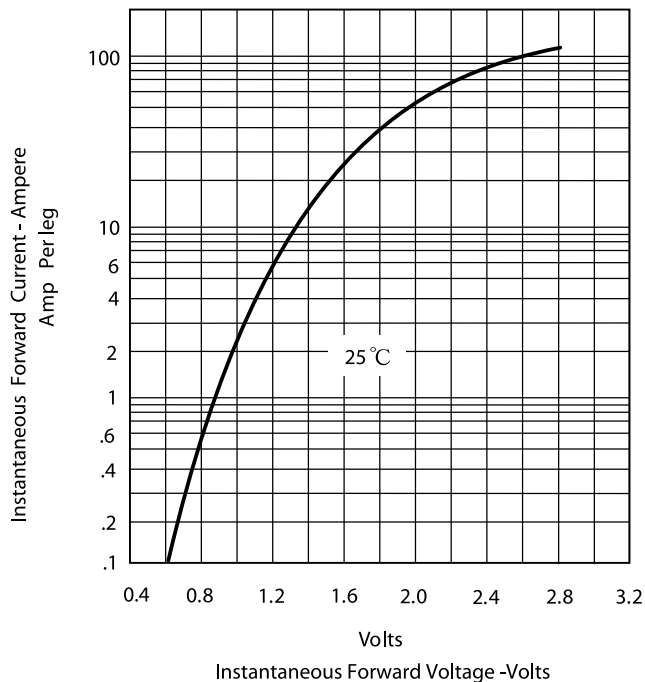


Figure .2- Forward Derating Curve

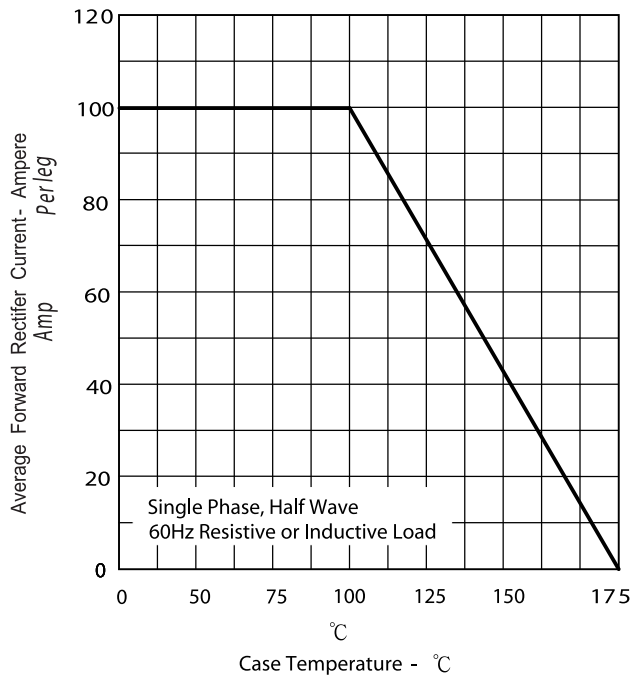


Figure .3- Peak Forward Surge Current

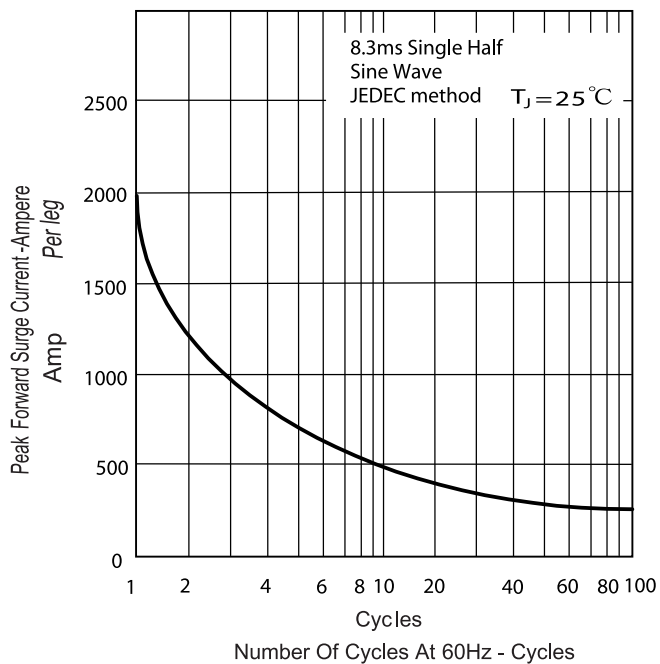


Figure .4 -Typical Reverse Characteristics

